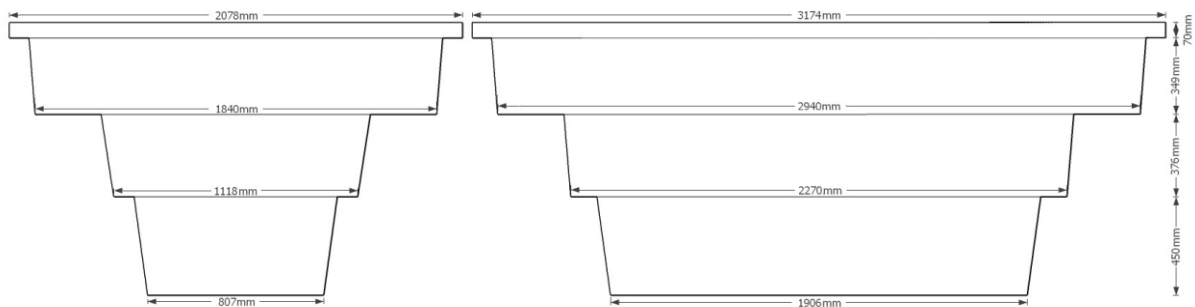
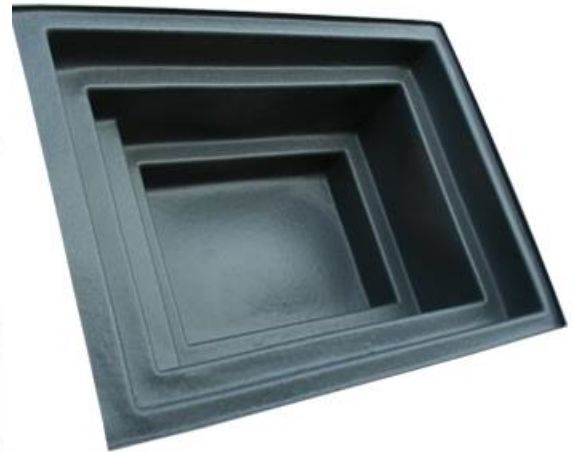


# ECO4000GP

Product description: 4,000 litre pond with stepped sides, suitable for koi or water features



Product Information				
Depth	Maximum Length	Maximum Width	Weight	Brim-full Capacity
1175mm	3105mm	2050mm	110kg	4,000 litres

#### PRODUCT NOTES:

- Pond must be sited on a level, supportive base
- Additional fittings can be added as and where required without compromising pond's structural integrity

Sizes approximate, owing to shrinkage  
Specification subject to change; please call to confirm details

#### PRODUCT DETAILS:

- Manufactured in black food grade polymer as standard; will not harm fish
- Approximate wall thickness: 5-6mm
- Can be fully buried in free draining material
- Can be partially buried, using a supporting frame, brickwork or blockwork

#### OPTIONAL EXTRAS:

- Plastic threaded outlet (male)
- Coloured polymer to suit location
- Water pumps
- Filters
- Holding tanks

#### BENEFITS:

- Value for money, high capacity semi-rigid pond
- Frost proof; will not crack in cold
- Stepped sides suitable for plants and pumps
- Robust, heavy duty product; industrial strength
- Smooth sides for easy cleaning
- Rotationally moulded for strength and durability
- 10 year warranty against manufacturing defects



Scan to view our full range of water tanks



Etills Ltd,  
Unit 1 Whiting Way,  
Melbourn,  
Royston,  
SG8 6NA



Call 01763 261781