



# DOUBLE IBC BUND

WITH PVC COVER

INSTALLATION GUIDE

Ecosure  
Efills Ltd  
Unit 1  
Whiting Way  
Melbourn  
Hertfordshire  
SG8 6NA

Phone: 01763 261781  
Fax: 01763 268409  
Email: sales@ecosure.co.uk  
Website: www.ecosure.co.uk



## THANK YOU

Thank you for purchasing the Ecosure Double IBC Bund with Cover. We trust you will be completely satisfied with your purchase.

## IMPORTANT SAFETY



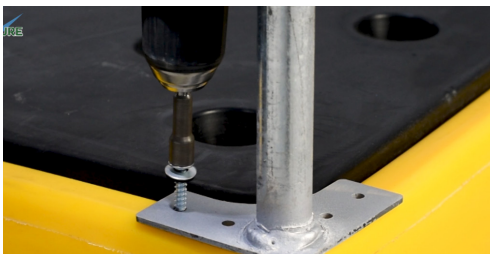
The Ecosure Double IBC Bund must be sited on a **flat, level base**. For installation guidance, please watch the promotional video at [ecosure.co.uk](http://ecosure.co.uk)

- Always check the solution being stored is suitable for MDPE.
- Ensure the outlet of your IBC faces forwards.
- Your IBC pallet should be centrally located on the IBC bund grid.

## IBC BUND WITH COVER INSTALLATION GUIDE

ALL GENERAL HEALTH & SAFETY AND PPE ADVICE SHOULD BE OBSERVED DURING INSTALLATION.

**a.** Using the self-tapping screws, attach the four vertical support bars to the four corners of Double IBC Bund.



## KIT CONTENTS

Your Double IBC Bund kit contains the following. If anything is missing, please contact 01763 261781

- 2 x Long support bars
- 2 x Short support bars
- 4 x Vertical support bars
- 5 x Roof supports
- 1 x PVC cover
- 4 x 90° Angle brackets
- Selection of 6.5/32mm self-tapping screws

To complete the installation you will need following.

- Electric screwdriver with 8mm hex bit
- 6mm hex key

**NOTE: These items are not included**

**b.** Loosen the threaded tightening bolts on the angle brackets with a 6mm hex key.



**c.** Slide the angle brackets on top of the vertical support bars.



**d.** Push the long support bars in to the angle brackets.



**e.** Push the short support bars in to the angle brackets and secure with the tightening bolts.

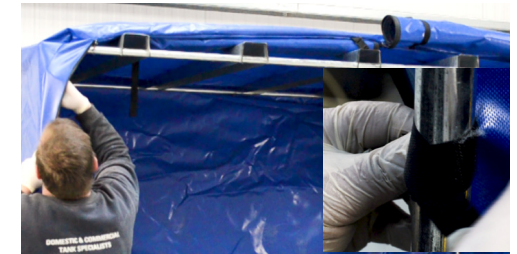


**f.** Attach the roof supports between the two long support bars - ensuring the widest part is towards the front.



**g.** It is best to fit the PVC cover from back to front - ensuring it covers all four corners of the frame.

You may require two or more people to do this.



**h.** Lower each rolled door and secure using the zip either side of the door(s).



## OPTIONAL BUNGEE CORD

First, tie a knot at the start of the bungee cord. Next, weave the cord in and out of the brass outlets at the bottom of the PVC cover.

Finish by tying a knot at the end. Trim off any excess.

