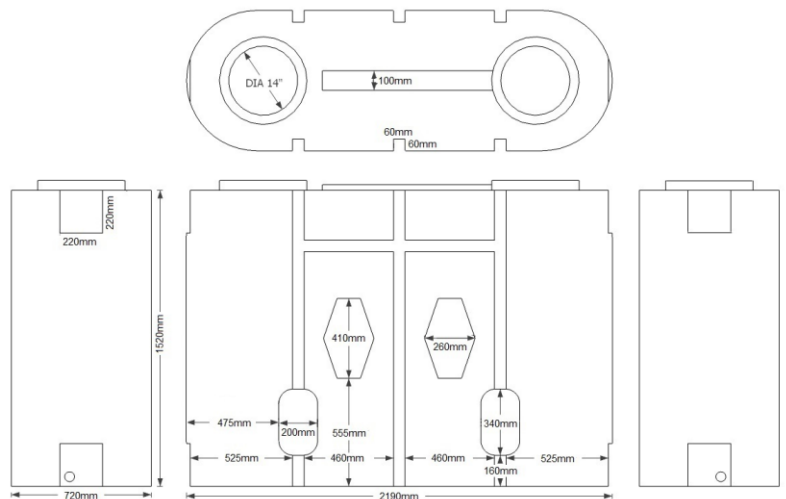
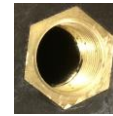


# ECO1900SLBLK

Product description: upright 1900 litre slimline baffled storage tank, suitable for internal or external use



## Product Information

Height	Length	Width	Weight	Outlets	Lid
1520mm	2190mm	720mm	120kg	2 x 2" BSP	14" screwdown

Sizes approximate, owing to shrinkage  
Specification subject to change; please call to confirm details

### PRODUCT NOTES:

- Tank must be sited on level, fully supporting base, leaving a gap of at least 50mm from walls or other tanks
- Additional fittings can be added as and where required without compromising tank's structural integrity.

### PRODUCT DETAILS:

- Made from virgin polymer
- Approximate wall thickness: 7mm
- 14" vented lid as standard
- 2 x 2" brass threaded outlets moulded into the tank, allowing tanks to be linked if appropriate
- Integral baffles

### OPTIONAL EXTRAS:

- 16" lid (vented or non-vented)
- Second lid
- 1" outlets or moulded blank
- Brass tap
- Brass isolation valve with hose connector
- Tank connectors
- Stainless steel inserts

### BENEFITS:

- Suitable for internal and external use
- Frost proof; will not crack in the cold
- Robust, heavy duty product; industrial strength
- Holds shape when tank is full
- Opaque plastic reduces algae growth in sunlight
- Slimline design; ideal when space is limited
- Rotationally moulded for strength and durability
- 2 year warranty against manufacturing defects



Etills Ltd,  
Unit 1 Whiting Way,  
Melbourn,  
Royston,  
SG8 6NA

Call 01763 261781