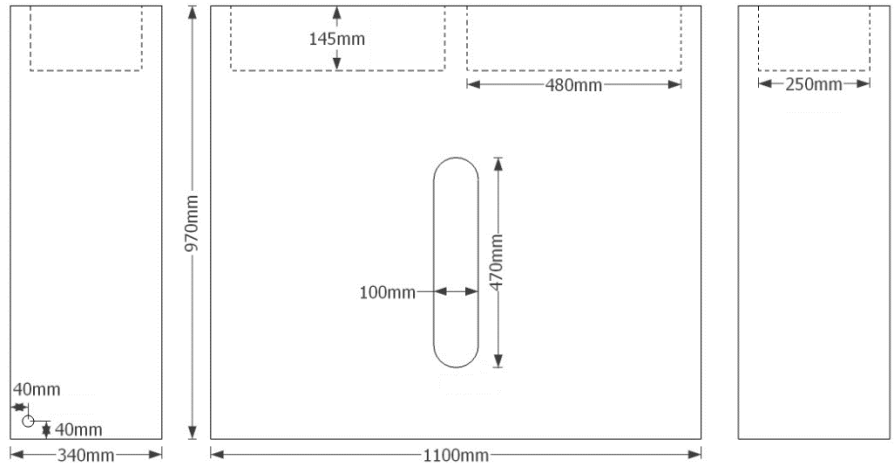
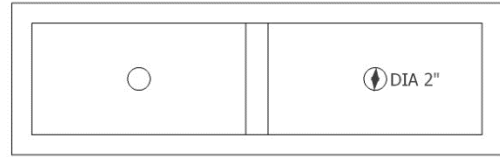
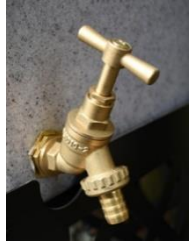


ECOSURE 280 WATER BUTT PLANTER

Product description: 280 litre water butt with double planter



Stand not included



Product Information

Height	Length	Depth	Weight	Outlet	Bowl depth	Bowl capacity	Reservoir capacity
920mm	1100mm	340mm	25kg	¾" BSP	2 x 145mm	2 x 17 litre	280 litre

PRODUCT NOTES:

- Site on a flat, level base
- Use supplied spade bit to fit rainwater diverter, below the bottom of the planter bowls
- Raise water butt planter, ensuring it is supported along its entire length (e.g. on courses of bricks, concrete block plinth, level railway sleepers)
- Fit bib tap to fill a watering can.

Sizes approximate, owing to shrinkage

PRODUCT DETAILS:

- Available in a variety of colours to suit location
- Slimline design
- 2 x planting bowls for all year round interest
- ¾" brass threaded outlet moulded into the tank
- Comes complete with standard downpipe diverter and brass tap

OPTIONAL EXTRAS:

- Guttermate filter diverter
- Metal stand

BENEFITS:

- Frost proof in winter; plastic will not crack
- Slimline design - ideal when space is limited
- Shape maintained when full of water
- Robust, heavy duty product; industrial strength
- Opaque plastic reduces algae growth in sunlight
- Colour samples available upon request
- Rotationally moulded for strength & durability
- 2 year warranty against manufacturing defects



Etills Ltd,
Unit 1 Whiting Way,
Melbourn,
Royston,
SG8 6NA

Call 01763 261781